

Beldray

Est 1872

Nobody Does It Better

Steam Mop with Back Saving Function Instruction Manual



With a simple push of a button



the special, back saving hinge bends into place



allowing you to clean under furniture or in tight places, without having to bend



THE **SCIENCE**
BEHIND HEAT



www.beldray.com

Please read all instructions carefully before first use and retain for future reference.

Getting Started

Remove the appliance from the box.

Remove any packaging from the appliance.

Place the packaging inside the box and store for future reference.

In the Box

Steam mop main body

Handle with extension tube

Lower extension tube

Pivot hinge

350 ml water tank

Removable measuring cup

Triangular mop head

2 microfibre mop pads

Carpet glider

Cleaning needle

Instruction manual

Features

1300 W steam power

350 ml removable water tank

Ready to use in 25 seconds

15 minutes continuous steam

Multipurpose – cleans hard floors and refreshes carpet

Chemical free cleaning

Ergonomic back saving feature

Safety instructions

When using electrical appliances, basic safety precautions should always be followed.

Check that the voltage indicated on the rating plate corresponds with that of the local network before connecting the appliance to mains power supply.

This appliance can be used by people with reduced physical, sensory or mental capabilities or lack of experience and knowledge can use this appliance, only if they have been given supervision or instruction concerning use of the appliance in a safe way and understand the hazards involved. Children should be supervised to ensure that they do not play with the appliance.

Children should not perform cleaning or user maintenance.

This appliance contains no user serviceable parts. Only a qualified electrician should attempt repairs. Improper repairs may place the user at risk of harm.

If the supply cord or plug is damaged or broken in any way, do not use the appliance until it has been inspected and repaired by a qualified electrician.

Keep the supply cord away from heat or sharp edges that could cause damage.

Keep the supply cord out of reach of children.

Keep the appliance out of reach of children when it is in use or when it is cooling down.

This appliance should not be operated by means of an external timer or separate remote control system.

Do not pull or carry the appliance by its supply cord.

Never pull the power cord to disconnect the appliance from the mains power socket.

Do not immerse the appliance in water or any other liquid.

Do not expose the appliance to rain.

Do not handle the appliance with wet hands.

Do not touch any parts of the appliance that may become hot during use.

Do not use the appliance after a malfunction or if it has been dropped, damaged or if there are visible signs of damage or if it is leaking.

Do not leave the appliance unattended whilst connected to the mains power supply.

Do not leave the appliance unattended. Keep children away from unit whilst in use.

Do not use the appliance for anything other than its intended use.

Do not use outdoors.

Do not direct steam at people or animals.

Do not direct steam towards equipment containing electrical components, such as the interior of ovens.

Do not use the appliance in an enclosed space filled with vapour given off by oil-based paint thinners, some mothproofing substances, flammable dust or other explosive or toxic vapours.

Do not use the appliance on leather, wax polished furniture or floors, kamdean floors synthetic fabrics, velvet or other delicate, steam-sensitive materials.

Do not use on any unsealed hard floor surfaces or surfaces that have been treated with wax as the sheen may be removed by the heat and steam action.

Do not use the appliance if the mop head cloth is not installed correctly.

It is always recommended to test an isolated area of the surface to be cleaned before proceeding.

Never add descaling, aromatic, alcoholic or detergent products into the appliance, as this may damage the appliance or make it unsafe for use.

Never leave the mop stationary on a floor area for longer than 15 seconds.

Always unplug the appliance after use and before any cleaning or maintenance.

Ensure that the appliance has cooled fully after use, before cleaning or storing away.

This appliance is intended for household use only. It should not be used for commercial purposes.

Caution: The appliance emits very hot steam; always exercise extreme caution during use.

Caution: Always wear suitable shoes when using the appliance and when changing the accessories. Do not wear slippers or open-toed footwear.

Warning: Danger of scalding. Please use care when using the appliance.

Additional Risks

Additional risks may arise when using this appliance, which may not be stated in the previous safety instructions. These risks can arise from misuse or prolonged operation of the appliance. Even when following the basic safety instructions highlighted in this manual, some risks cannot be avoided. These include injury from touching hot surfaces, changing accessories or using the appliance for a long period of time. It is recommended that you take regular breaks during prolonged use of the appliance.



Steam



Caution: Hot surface



1. Steam mop main body
2. Handle
3. Lower extension tube
4. Pivot connection
5. Lower storage clip
6. Upper storage clip
7. Triangular mop head

8. Carpet glider
9. Back saving quick release button
10. Triangular mop head release button
11. 350 ml removable water tank
12. 2 microfiber mop pads
13. Cleaning needle
14. Steam nozzle

Instructions for Use

Before First Use

Before using the steam mop for the first time, ensure that it is switched off and unplugged from the mains power supply.

Clean the exterior surface of the steam mop with a soft, damp cloth and dry thoroughly.

Assembling the Steam Mop

STEP 1: Insert the handle with extension tube into the pivot hinge at the tapered end (figure 1).

STEP 2: Insert the lower extension tube (with the lower cord storage clip) into the assembled handle and pivot hinge section (figure 2).

STEP 3: Insert the assembled handle section into the steam mop main body (figure 3).

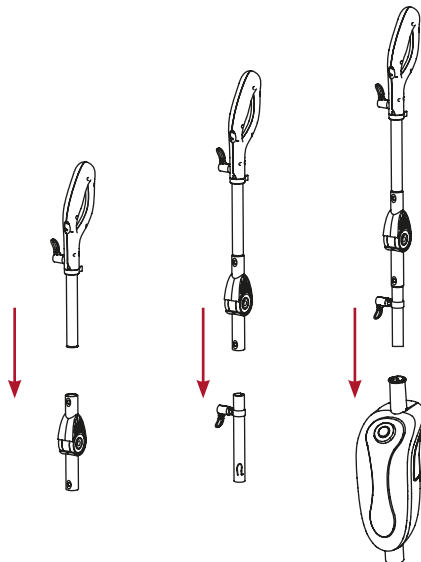


Figure 1

Figure 2

Figure 3

Attaching the Triangular Mop Head

Slide the bottom end of the steam mop main body onto the triangular mop head until the triangular mop head spindle clicks into place (figure 5).

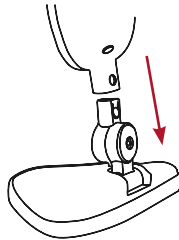


Figure 5

Always attach the triangular mop head using both hands, ensuring that it clicks into place correctly.

The triangular mop head can be removed from the steam mop main body by pressing the button on the triangular mop head spindle.

Warning: Never force the steam mop body onto the triangular mop head, as this could damage the steam mop.

Attaching the Microfibre Mop Pad

Place the mop pad in-between the triangular mop head and the carpet glider and press down firmly (figure 6). The design of the triangular mop head will hold the mop pad securely in place.

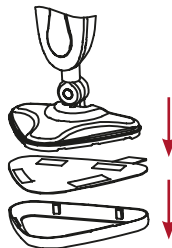


Figure 6

Using the Back Saving Function

To unlock the pivot connection in order to use the back saving function, press the quick release button on the handle.

To lock the handle back into place, raise the handle into an upright position until it clicks and locks into place automatically.

Filling the Water Tank

Unplug the steam mop from the mains power supply.

Remove the water tank from the steam mop main body and then open the water tank cap by twisting it in an anticlockwise direction. Fill the water tank (taking care not to overfill it) using the tap and then close.

Place the water tank back onto the steam mop main body until it clicks into place.

Using the Steam Mop

Plug the steam mop into the mains power supply.

The indicator light will illuminate red to show that it is heating up.

The steam mop will take approximately 25 seconds to heat up. Once it has reached the correct temperature, the indicator light will change to blue; the steam mop is now ready to use.

Note: Never allow the water in the tank to drop below the minimum level mark.

Cleaning and Maintenance

Before attempting any cleaning or maintenance, always unplug the steam mop from the mains power supply and allow it to cool sufficiently.

Drain any remaining water from the water tank and clean it after every use.

Wipe the steam mop main body with a soft, damp cloth and allow to dry thoroughly.

Clean the triangular mop head in warm, soapy water, rinse and dry thoroughly.

Never immerse the electrical components of the steam mop in water or any other liquid.

The steam mop water tank and accessories are not suitable for dishwasher use.

Do not use harsh or abrasive cleaners or detergents.

The mop pad is machine washable on a 'warm' setting. Always use a mild detergent and lay it flat to dry. Never use bleach or fabric softener when washing the mop head pad.

Warning: Do not turn on the steam mop during cleaning.

Removing Limescale

If the steam mop begins to produce steam slower than usual or stops producing steam altogether, you may need to remove limescale. Limescale can develop over time on the metal parts of the steam mop and greatly affects performance.

It is necessary to remove limescale on a regular basis, every 25-50 times you use a full tank of water or at least once a month, especially in areas with hard water.

The frequency of limescale removal depends upon the hardness of your tap water and usage. Calcium deposits may be emitted with the steam. Please descale in a sink, bucket or towel to protect carpets etc.

STEP 1: To remove the limescale, prepare a solution of white vinegar and tap water and add it to the water tank.

STEP 2: Secure and position the steam mop to ensure that the steam released is aimed away from the floor or surrounding objects and surfaces.

STEP 3: Plug the steam mop into the mains power supply and turn it on; allow it to produce steam until all of the solution is used.

STEP 4: Repeat the above procedure as often as necessary, then fill the tank with fresh water and rinse.

Warning: Do not leave the steam mop unattended during the limescale removal process or during use.

Note: Perform a test on a suitable isolated surface after limescale removal to ensure that there is no debris left in the unit.

Note: Due to the nature of UK water supplies, some areas of the country experience larger amounts of limescale build-up. If you live in one of these areas you may need to decalcify the unit more often.

Removing Calcium Deposits from the Water Tank

Add one or two tablespoons of white vinegar to a full water tank and close it. Shake the contents, then rinse thoroughly.

Clearing Blockages

Ensure that the steam mop is switched off and has cooled fully.

If there is a blockage in the steam nozzle, use the cleaning needle provided to clean the blockage by inserting it into the steam nozzle hole (figure 7).

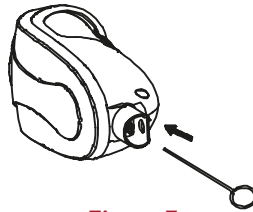


Figure 7

After using the cleaning needle, add a descaling solution to the tank (see the section entitled 'Removing Limescale') and follow the steps listed.

Troubleshooting

Problem	Cause	Solution
Reduced or no steam.	The water tank may be empty. The steam nozzle may be blocked. There is no power to the steam mop. There may be a limescale build up.	Add water to refill the water tank. Clean the steam nozzle. Make sure that the steam mop is plugged in to the mains power supply. Descale the steam mop using the instructions in the 'Removing Limescale' section.
Steam mop does not turn on.	There is a blown fuse or breaker. The power cord is not plugged in. The internal fuse is blown.	Check the fuse by replacement or reset the breaker. Plug the power cord into a working mains power supply. Contact customer service for further advice.

Storage

Before storing the steam mop, ensure that it has cooled and dried fully.

Ensure that the water tank is empty.

Remove the mop head pad, making sure that it has been cleaned according to the instructions in the 'Cleaning and Maintenance' section.

Store in a cool, dry place.

Specifications

Product code: BEL0196

Voltage: 220-240 V~ 50 Hz

Output: 1300 W

Water tank capacity: 350 ml

Waterproof level: IPX4

Connection to the mains

Please check that the voltage indicated on the product corresponds with your supply voltage.

Important

As the colours in the mains lead of this appliance may not correspond with the coloured markings identifying the terminals in your plug, please proceed as follows:

The wires in the mains lead are coloured in accordance with the following code:

Blue Neutral (N)

Brown Live (L)

Green/Yellow Earth (\perp)

FOR UK USE ONLY - Plug fitting details (where applicable).

The wire coloured BLUE is the NEUTRAL and must be connected to the terminal marked N or coloured BLACK.

The wire coloured BROWN is the LIVE wire and must be connected to the terminal marked L or coloured RED.

The wire coloured GREEN/YELLOW must be connected to the terminal marked with the letter E or marked \perp .

On no account must either the BROWN or the BLUE wire be connected to the EARTH terminal (\perp).

Always ensure that the cord grip is fastened correctly.

The plug must be fitted with a fuse of the same rating already fitted and conforming to BS 1362 and be ASTA approved.

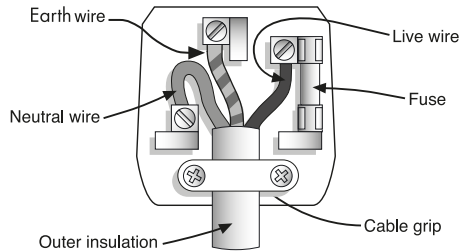
If in doubt consult a qualified electrician who will be pleased to do this for you.

Non-rewireable mains plug

If your appliance is supplied with a non-rewireable plug fitted to the mains lead and should the fuse need replacing, you must use an ASTA approved one (conforming to BS 1362 of the same rating).

If in doubt, consult a qualified electrician who will be pleased to do this for you.

If you need to remove the plug - DISCONNECT IT FROM THE MAINS and then cut it off the mains lead and immediately dispose of it safely. Never attempt to re-use the plug or insert it into a socket outlet as there is a danger of an electric shock.



UP Global Sourcing

Victoria Street, Manchester, OL9 0DD. UK.

If this product does not reach you in an acceptable condition please contact our Customer Services Department by one of the following methods:

Telephone: +44 (0)333 577 9820*

*Telephone lines are open Monday – Friday, 9am – 5pm (Closed Bank Holidays)

Email: customersupport@beldray.co.uk

Fax: 0161 628 2126

Please have your delivery note to hand as details from it will be required.

If you wish to return this product please return it to the retailer from where it was purchased with your receipt (subject to their terms and conditions).

Guarantee

This product is guaranteed for a period of 1 year from the date of purchase against mechanical and electrical defects.

This guarantee is only valid if the appliance is used solely for domestic purposes in accordance with the instructions and provided that it is not connected to an unsuitable electricity supply or dismantled or interfered with in any way or damaged through misuse. Under this guarantee we undertake to repair or replace free of charge any parts found to be defective. Reasonable proof of purchase must be provided.

Nothing in this guarantee or in the instructions relating to this product excludes, restricts or otherwise affects your statutory rights.

In line with our policy of continuous development we reserve the right to change this product, packaging and documentation specification without notice.

Consumables are not guaranteed i.e. plug and fuse.

The crossed out wheelee bin symbol on this item indicates that this appliance needs to be disposed of in an environmentally friendly way when it becomes of no further use or has worn out. Contact your local authority for details of where to take the item for recycling.



Distributed by:
UP Global Sourcing,
Victoria Street, Manchester, OL9 0DD, UK.
+44 (0)333 577 9820
customersupport@beldray.co.uk

© 2014 Beldray Trademark. All rights reserved.

Please retain all instructions for future reference.
Made in China.
CD080813/MD280214/V4